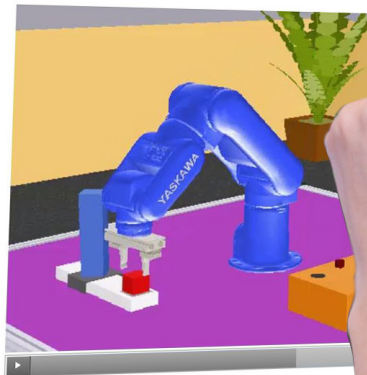


Inputs and Outputs

Input Signals

Input signals received by the controller provide it with information about the robot's environment. The controller can be programmed to respond according to the state (ON or OFF) of these input signals.

For example, if an input signal ON is received from the parts feeder, it could mean that a part is currently available at the feeder, and the robot can then move to the feeder to pick up the part. If an input OFF signal is received from the feeder, it could mean that parts are currently unavailable at the feeder.



online Learning for CTE

Powered by LearnMate®

- Remote Online Learning and Remote Labs
- Format That Engages Digitally-Native Students
- Immersive Instructional Experience with Project-Based Learning
- Flexible Curriculum Provide Differentiated Instruction
- Empowers teachers to succeed
- Virtual Classroom Management
- Online Assessment Delivery

Enhanced Experience for Students with Simulated Labs

ARE YOU LOOKING FOR THE RIGHT SOLUTION TO TEACH TECHNOLOGY REMOTELY?

Intelitek online curriculum for technology training use simulation tools and multiple instructional strategies to provide a solution for virtual career instruction.

The easy to use, state-of-the-art, industry aligned content drives student engagement and learning success.

With over 2500 hours of online content LearnMate from Intelitek enables real-time learning and a virtual lab setting. Using online simulation, students can learn hands-on remotely as if they were in the lab with real equipment.

Intelitek's standards based curriculum, deliver instruction in a blended learning format with interactive online delivery, simulations and team-based activities.

Virtual labs provide the engaging learning environment for students who are remote from their educational institution.

Virtual courses consist of 100% on-line, on-demand e-learning that deliver relevant skills to students.

Virtual courses reach more students, cover more subjects and enable accessibility.

online Learning for CTE

Online Course Include:

- Foundations of Manufacturing
- Machining
- Industrial Robotics
- Automation/Mechatronics
- Process Control
- FMS/CIM & Industry 4.0
- STEM Pathways and Coding

Virtual eLearning Content with Simulation

To be effective, CTE eLearning needs to provide hands-on, practical experience. Intelitek cloud based eLearning integrates virtual labs to provide the most engaging learning environment for students even if they are physically remote. Intelitek's pedagogic instructional designers, programmers and subject matter experts have developed interactive programs combining rich media content, digital simulations, projects, exercises, online lab projects and assessments to guide students through the learning process completely online.

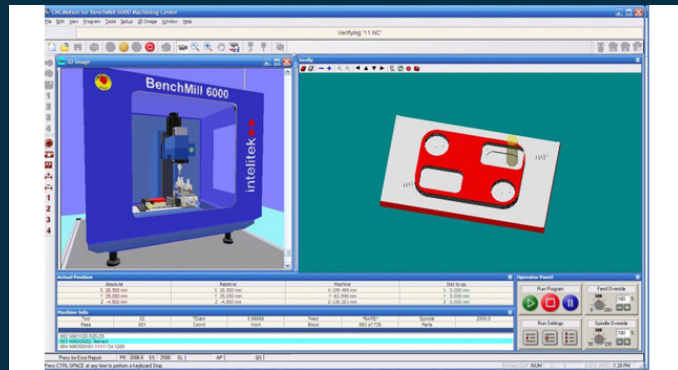
LearnMate is a cloud-based SaaS application that can be accessed by teachers and students from anywhere. Using the LearnMate simulation agent and Intelitek simulation softwares like RoboCell, CNCMotion, PneuMotion, HydraMotion, ProcessMotion, and PLCMotion students complete hands on practical exercises without being physically in the classroom. Teachers can launch live classroom sessions to interact with remote students.

Empowering Educators

LearnMate is designed for educators and automates time-consuming class administration, freeing teachers to focus on teaching, and to recognize and adapt to individual student needs.

LearnMate provides meaningful assessment and real-time feedback on student progress, providing teachers the valuable information that enables differentiated teaching methods.

Included with all courseware are program requirements, detailed outlines, teacher guides, and assessment details including sample solutions and sample program code.



Contact us today

T: 1 800-221-2763

E: info@intelitek.com

